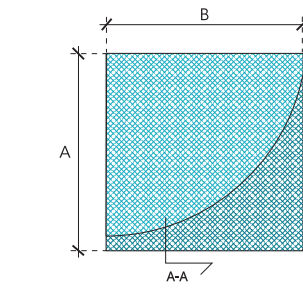
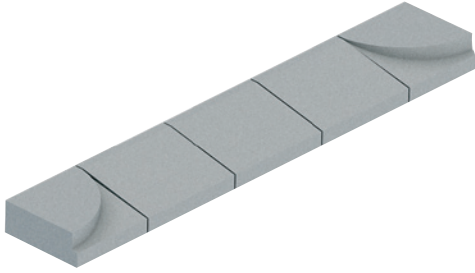


SCIVOLO DI ACCESSO CARRALE

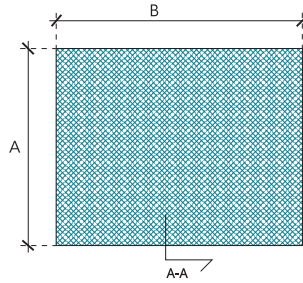
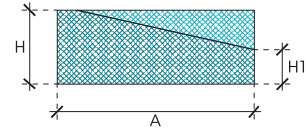
CE UNI EN 1340:2004

Realizzati in cemento vibrocompresso.



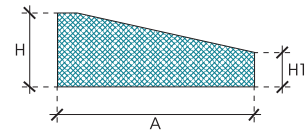
Dardino Dx - Sx

SEZ. A-A



Piano inclinato

SEZ. A-A



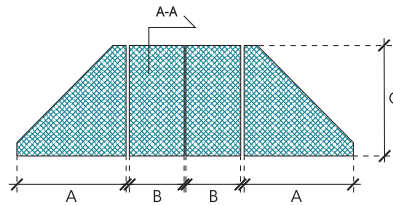
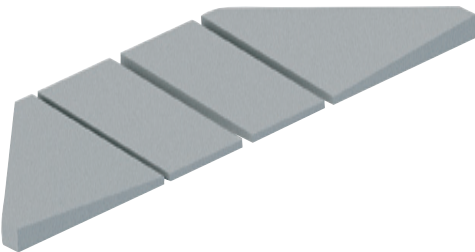
CODICE ARTICOLO	TIPOLOGIA	DIMENSIONI (cm) A x B	ALTEZZA (cm) H - H1	NOTE	PEZZI / IMBALLO	VOLUME DI INGOMBRO (m³)	PESO (Kg)	PREZZO € /cad.
PIRR5040	Piano inclinato	40 x 50	15 - 5		Sciolti	0,038	50	
PDRR4040	Dardino DX - SX	40 x 40	15 - 5		Sciolti	0,024	48	

Manufatti stradali

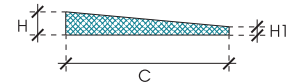
SCIVOLO PER DISABILI

CE UNI EN 1340:2004

Realizzati in cemento vibrocompresso.
Superficie calpestabile antisdrucciolo.



SEZ. A-A



CODICE ARTICOLO	COMPOSIZIONE	DIMENSIONI (cm) A x B x C	ALTEZZA (cm) H - H1	NOTE	PEZZI / IMBALLO	VOLUME DI INGOMBRO (m³)	PESO (Kg)	PREZZO € completo
CRNSCIV	2 Dardini + 2 Scivoli	100 - 50 - 100	20 - 5	1		0,1	460	

1. Peso singoli articoli: scivolo = 60 kg, dardino = 170 kg

VEDI Catalogo " ARREDO URBANO IN GRANITO "

PEZZI SPECIALI IN GRANITO

CE UNI EN 1343:2003

Scivolo carrale o per disabili in granito portoghese in grana medio-fine o fine, con finitura bocciardata.

